

Projects

[LichteFeld Inc](#) > [Projects](#) > Farrier Products

Farrier Products

Distribution Centers



Square Feet

5,000 s.f. Building Addition



Project Location

361 Haven Hill Rd - Shelbyville, Kentucky



Construction Dates

9-1-11 to 12-20-11



End User

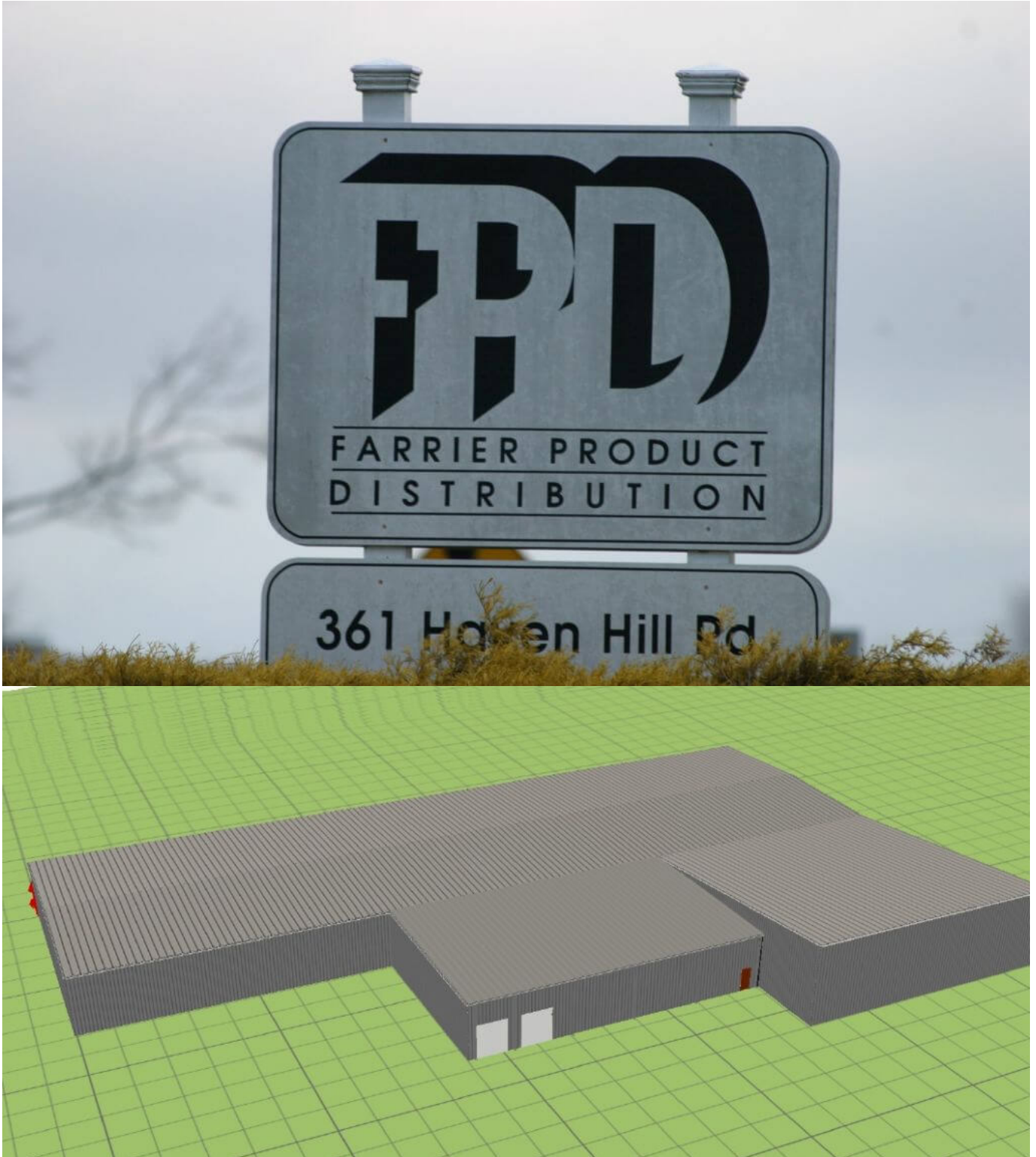
Distribution





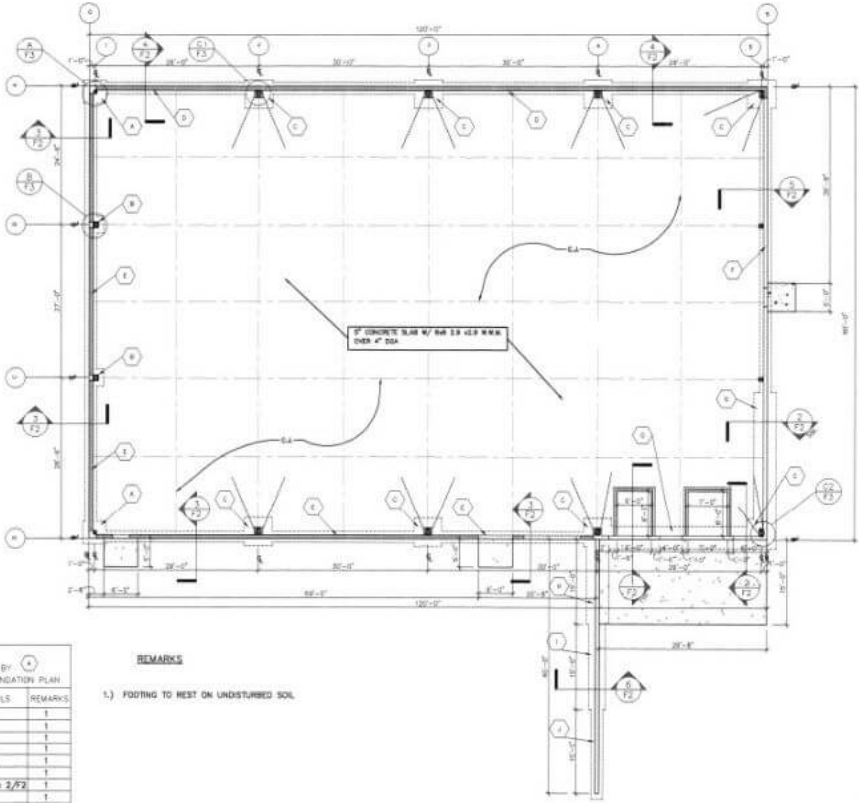






FOUNDATION NOTES:

- 1) CONCRETE CONTRACTOR MUST VERIFY LOCATION, SIZE AND PLACEMENT OF ANCHOR BOLTS USING BUILDING MANUFACTURER'S DATA. CONTRACTOR MUST VERIFY IN FIELD.
- 2) CONCRETE TO BE 3000 P.S.I. FOR FOUNDATIONS. ALL CONCRETE TO BE 4000 P.S.I. FOR INTERIOR SLABS.
- 3) CONTRACTOR TO PROVIDE REINFORCED CONCRETE WORK REQUIRED FOR BRACED BAYS. VERIFY REQUIREMENTS WITH BUILDING MANUFACTURER.
- 4) CONTRACTOR TO SUPPLY ARCHITECT WITH BUILDING MANUFACTURER'S STAMPED ENGINEERING DRAWINGS AND BASE REACTIONS BEFORE BEGINNING CONSTRUCTION SO THAT ARCHITECT MAY VERIFY FOUNDATION DESIGN.
- 5) ALL FOOTINGS AND PIERS ARE TO BE CENTERED ON THE BUILDING COLUMNS UNLESS OTHERWISE NOTED.
- 6) COLUMN PIERS ARE TO BE PLACED INTERNAL WITH THE GRADE BEAM OR FOUNDATION WALLS, WITH REINFORCING TO BE CONTINUOUS THROUGH PIERS.
- 7) COLUMN PIERS MUST BE MIN. 1" LARGER ON EACH SIDE THAN BUILDING MANUFACTURER'S REQUIRED COLUMN BASE PLATES. SEE PLAN DETAILS. CONTRACTOR MUST COORDINATE WITH BUILDING MANUFACTURER AND VERIFY IN FIELD.
- 8) BUILDING FOUNDATIONS ARE DESIGNED FOR 1000 P.S.F. SOIL BEARING CAPACITY. GEOTECHNICAL STUDIES HAVE NOT BEEN PERFORMED, AND WILL NOT BE PERFORMED UNLESS SPECIFICALLY REQUESTED BY OWNER. CONTRACTOR TO VISUALLY INSPECT BOTTOM OF FOUNDATION FOOTERS AND REPORT AND QUESTIONABLE CONDITIONS TO ARCHITECT.
- 9) ALL ANCHOR BOLTS TO BE SET BY TEMPLATE MATCHING BUILDING MANUFACTURER'S LAYOUTS.
- 10) NO FIELD ALTERING OF BASE PLATES IS ALLOWED.
- 11) FINISH OF FLOOR SLAB WITH ALL PIERS AND GRADE BEAMS TO BE 1/2" NEW EXPANSION JOINT MATERIAL.
- 12) CONTRACTOR TO SET OVERHEAD DOOR JAMB ANCHORS INTO FLOOR SLAB AS REQUIRED BY BUILDING MANUFACTURER.
- 13) FLOOR SLAB TO BE POURED THRU AT ALL DOORWAYS, SLORE 26 TO OUTSIDE.



FOOTING SCHEDULE					SHOWN BY
					ON FOUNDATION PLAN
TYPE	SIZE	REINFORCING	PIER PLAN	DETAILS	REMARKS
A	4'-0" X 4'-0" X 1'-0"	(5) # 5 E.W. B7M.	A/13	1/13	1
B	3'-0" X 3'-0" X 1'-0"	(4) # 5 E.W. B7M.	B/13	1/13	1
C	5'-0" X 5'-0" X 1'-0"	(6) # 5 E.W. B7M.	C1-C2/13	1/13	1
D	2'-0" X 1'-0"	(3) # 4 E.W. B7M.		4/13	1
E	2'-0" X 1'-0"	(3) # 4 E.W. B7M.		3/13	1
F	2'-0" X 1'-0"	(3) # 4 E.W. B7M.		5/13	1
G	4'-0" X 1'-0"	(5) # 4 E.W. B7M.		1/12 & 2/12	1
H	4'-0" X 1'-0"	(5) # 4 E.W. B7M.		6/12	1
I	3'-0" X 1'-0"	(4) # 4 E.W. B7M.		6/12	1
J	2'-0" X 1'-0"	(3) # 4 E.W. B7M.		6/12	1

REMARKS

- 1.) FOOTING TO REST ON UNDISTURBED SOIL.

FOUNDATION PLAN







Property Details

5,000 s.f. warehouse distribution building addition. Custom engineered steel building by Butler Manufacturing. MR-24 standing machine seam roof system with 25 year warranty. Wall light panels allow natural light to come into the facility. Two dock doors and two dock levelers added, new electrical lighting and HVAC.

Interior office expansion and mezzanine expansion competed as well.

Designed and built by LichteFeld, Inc. along with architectural services from Keyes Architects.