



Projects

[LichteFeld Inc](#) > [Projects](#) > Houston Johnson Office Renovation/Addition

Houston Johnson Office Renovation/Addition

Distribution Centers



Square Feet

8,840 s.f.



Project Location

13200 Complete Court, Louisville, KY



Construction Dates

May 2024 through August 2024

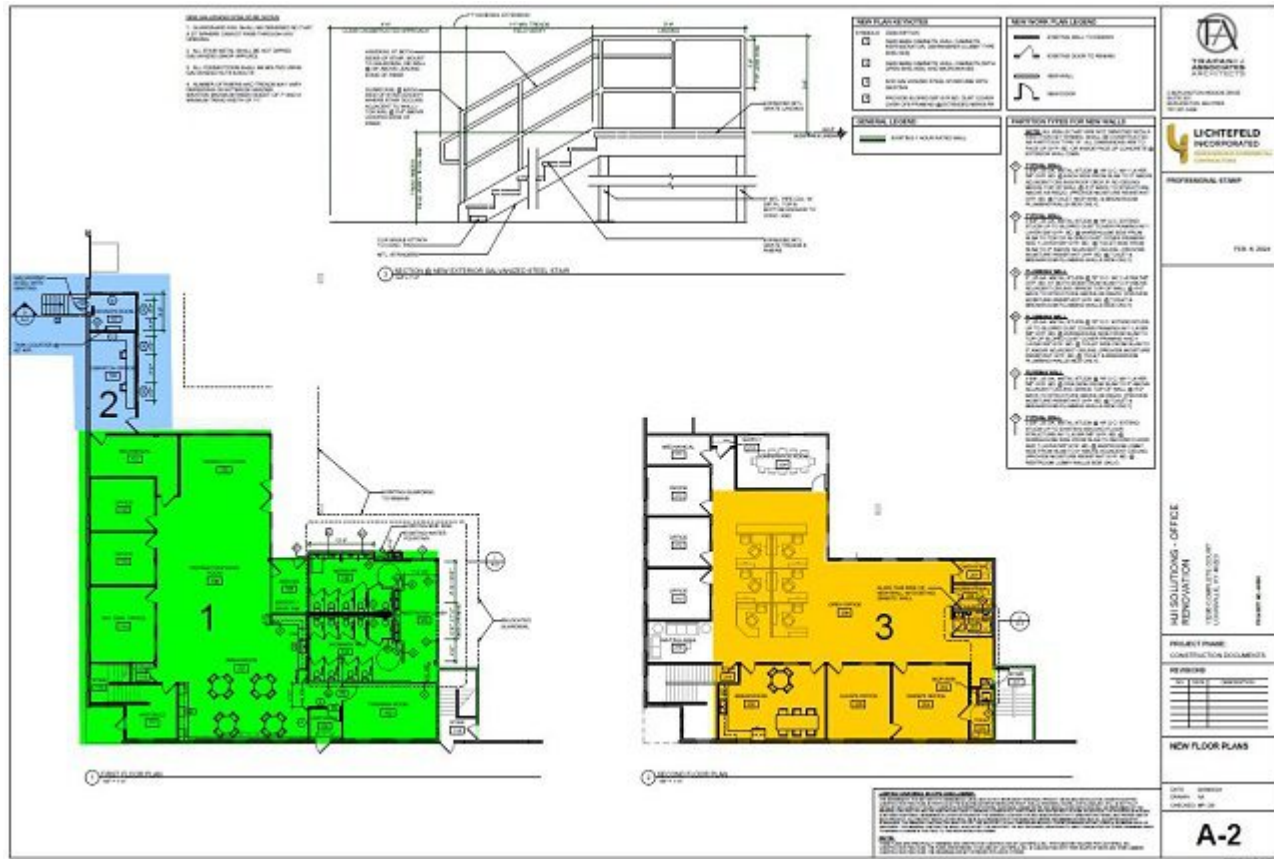


End User

Office remodel











Property Details

This project will be 8,840 s.f. of new flooring, ceilings, base, paint, remove walls, expand rooms, demo restrooms, rework and expand restrooms, renovate 2nd floor offices, add driver room, and truck receiving/shipping office. Add new employee entrance and give entire office a facelift.

Designed by LichteFeld, Inc. partnered with Trapani Architects.