



Interstate Utility Trailer

Projects

[LichteFeld Inc](#) > [Projects](#) > Interstate Utility Trailer

Interstate Utility Trailer

[Office / Warehouse](#), [Trucking Facilities](#)



Square Feet

33,000 s.f.



Project Location

5263 Progress Way, Sellersburg, IN



Construction Dates

May 2024 through December 2024



End User

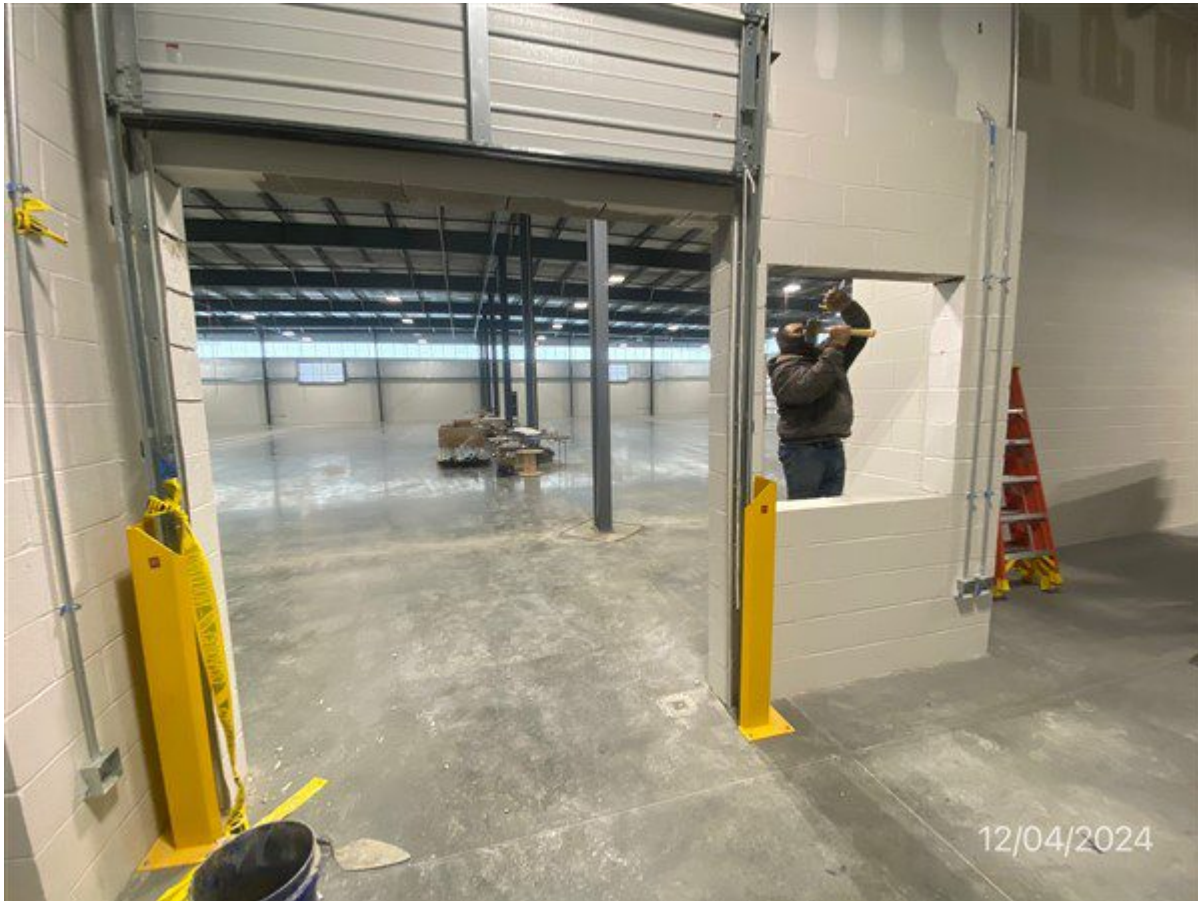
Office/tractor/trailer repair service



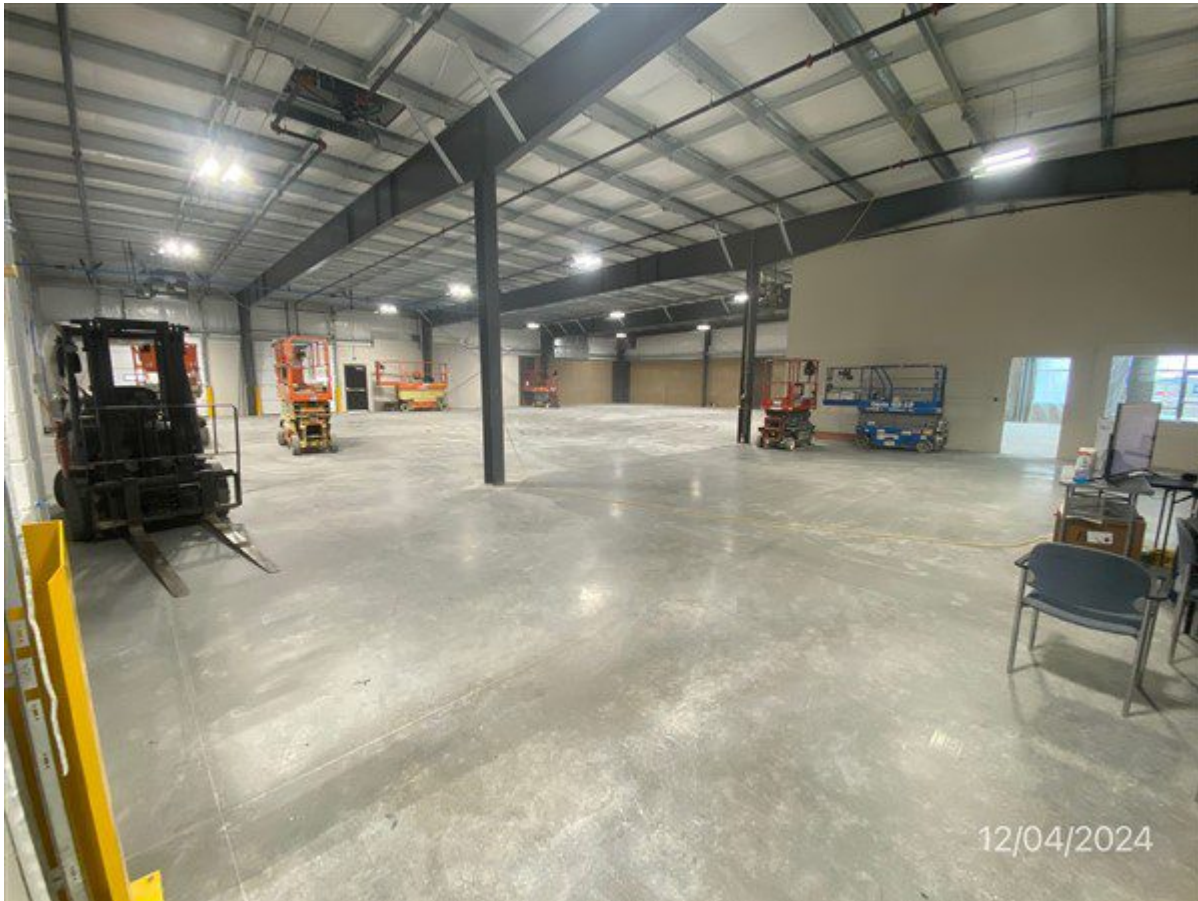


















Property Details

The project is a 33,000 s.f. office/repair shop. There is 5,180 s.f. of office space, 1,705 s.f. showroom, 7,195 s.f. parts room, and 18,920 s.f. of garage repair. There are 12 bays for trailer repair.



Interstate Utility Trailer

This project is a 33,000 s.f. Butler custom metal building, 10' tall masonry Wainscot (MaxBric), metal wall panels, storefront glass, wall lite panels, concrete slabs, metal canopies, 12 overhead drive in doors, metal pedestrian doors, concrete truck aprons, and Butler state of the art MR-24 standing machine seamed roof system with 25-year warranty.

The site is 8 acres developed and has room for 200 trailers all stored on an asphalt parking lot.

This building project was designed and built by LichteFeld, Inc. partnered with Trapani Architects and Butler Manufacturing.