



KCC International, Inc.

# Projects

[LichteFeld Inc](#) > [Projects](#) > KCC International, Inc.

## KCC International, Inc.

Distribution Centers



### Square Feet

30,000 s.f.



### Project Location

Grassland Ave. Louisville, KY 40299



### Construction Dates

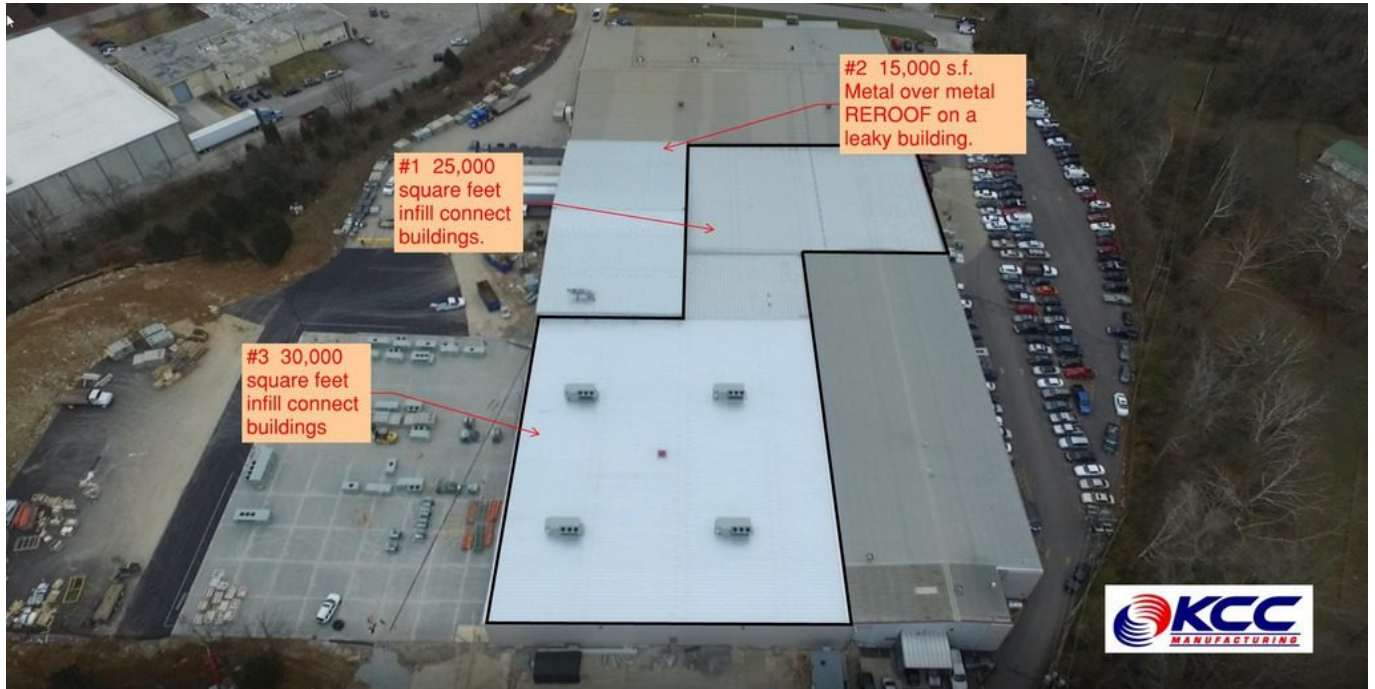
July 2016 thru December 2016



### End User

Manufacturing/distribution - HVAC





















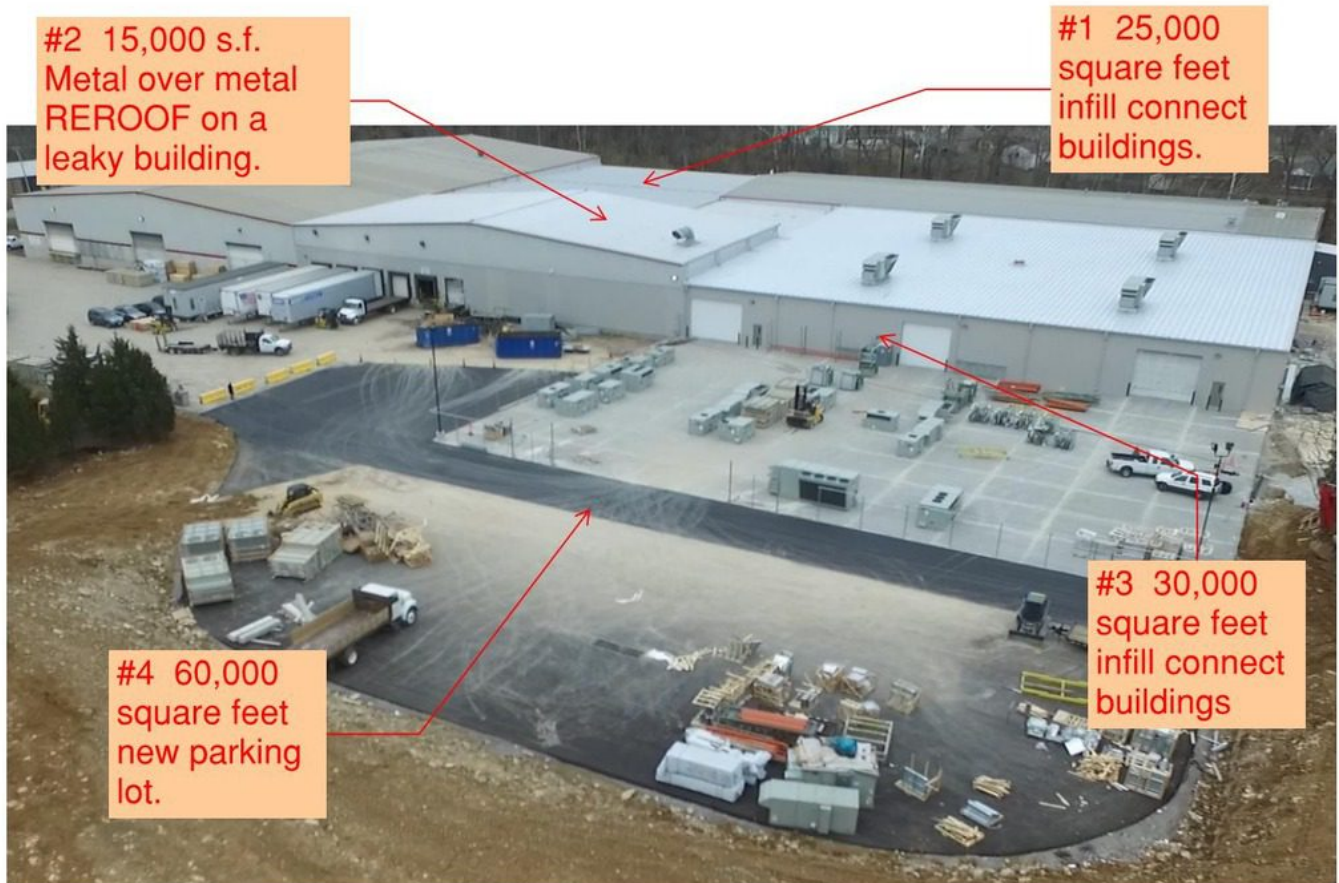












## Property Details

This project was a 30,000 s.f. metal building addition for equipment and manufacturing expansion and distribution. Heavy site work involved on this one. Approx. 1 acre major site excavation and dirt redistribution to allow for the expansion. LichteFeld, Inc. was under a liquidated damages clause whereby a penalty would have to be paid to owner if the completion date was not made. LichteFeld, Inc. completed the project early and was awarded a bonus for early completion. This project was difficult in that the manufacturing operations had to remain in tact and unobstructed while construction took place. This project was phased and articulated around operations at KCC international. There was no complications. Planning was orchestrated with the LichteFeld and the KCC teams and detailed to the highest degree. The project was a huge success. The project was basically built around the plant and overhead while KCC was in operation underneath construction.





KCC International, Inc.

Approx. 5,000 cubic yards of dirt, rock, and concrete was displaced and moved to create the building pad and parking lot areas. View the video below for more details.

6 month project completed early while under phased constraints....

Designed and built by LichteFeld, Inc.