

Projects

[LichteFeld Inc](#) > [Projects](#) > Louisville Dive Center

Louisville Dive Center

Recreational Facilities



Square Feet

Approx. 4,200 s.f. addition and pool cover



Project Location

4265 Roosevelt Ave, Louisville, KY 40213



Construction Dates

Dec. 2021 thru Feb. 2022



End User

Indoor Dive Center/Training



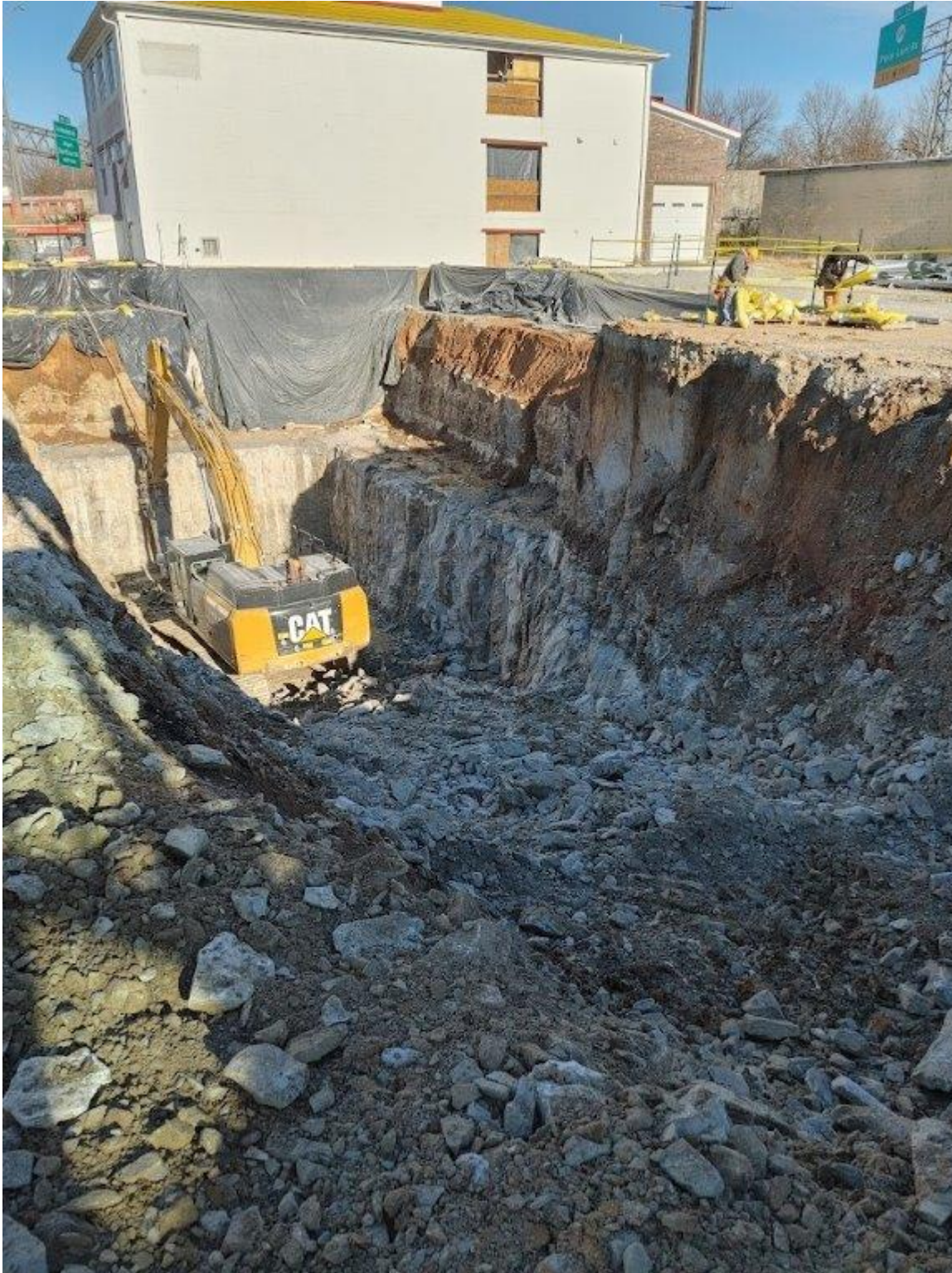


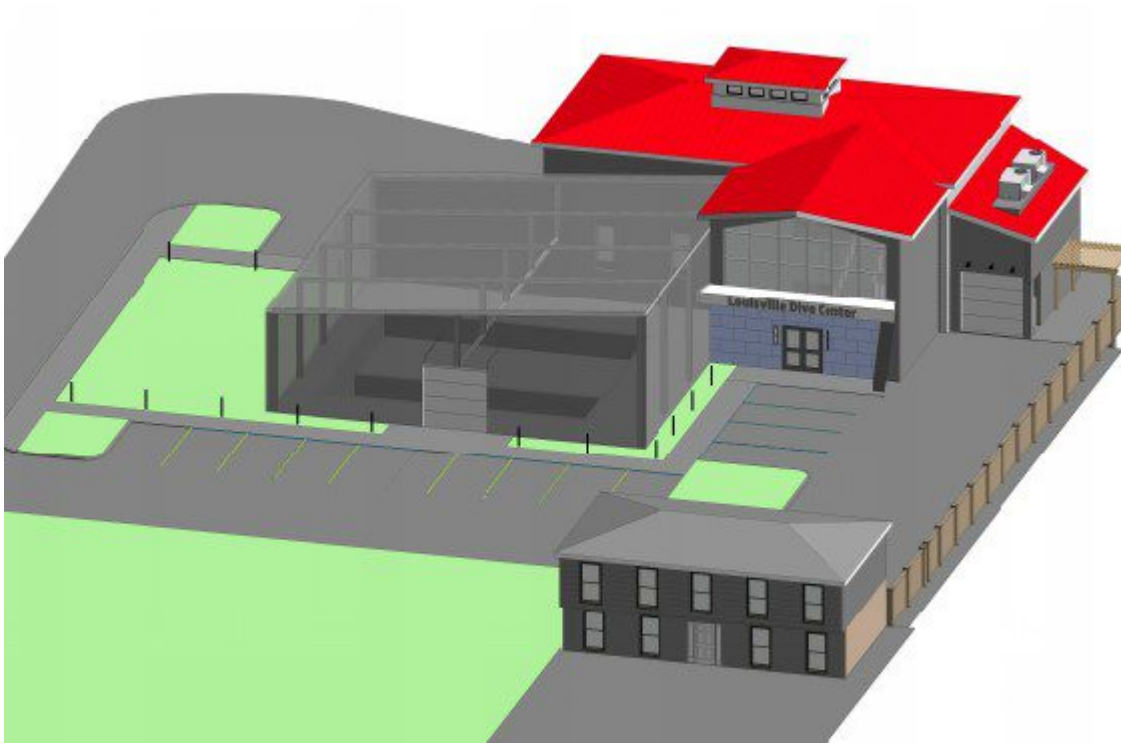




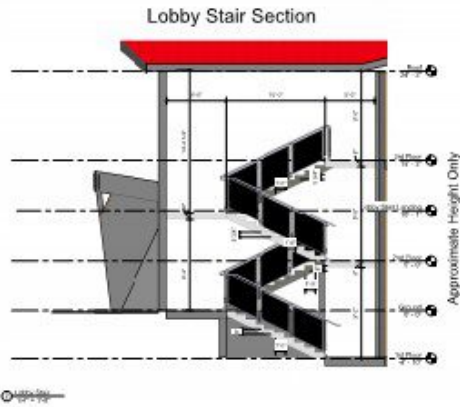








Note:
Builder must verify all dimensions,
drawings, and code compliance
before starting construction.



Lobby Entry Section

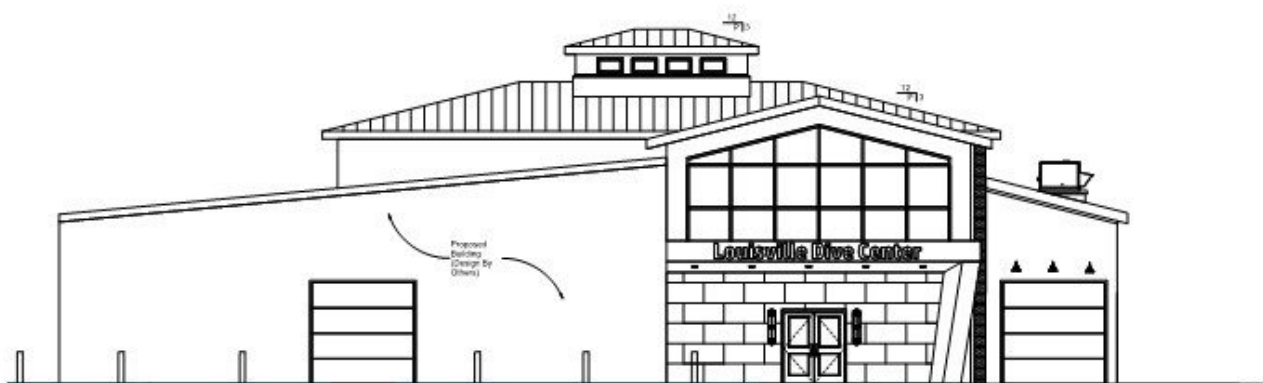
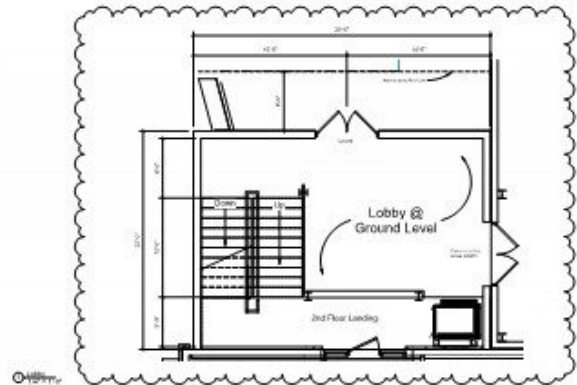


E

Visual Space Reference Image



Lobby Floor Plan





Property Details

LichteFeld, Inc. has been brought onto the Lancaster Development team to design and build a swimming pool enclosure with a Butler building. PR Lancaster will build a 40' deep swimming pool at the Louisville Dive Center and remodel the entire facility to a state of the art diving educational center. The facility will also be used for rescue training for underwater automotive rescue and airplane fuselage rescue.

The building will also have a new entrance with handicap lift.

Building is designed and built by LichteFeld, Inc. in partnership with Architectural Investments and Butler Manufacturing.