



Projects

[LichteFeld Inc](#) > [Projects](#) > Simpsonville Baptist Church

Simpsonville Baptist Church

Schools and Churches



Square Feet

18,500 s.f. two story



Project Location

7208 Shelbyville Road, Simpsonville, KY 40067



Construction Dates

7-1-2022 thru 4-1-2023



End User

Church School









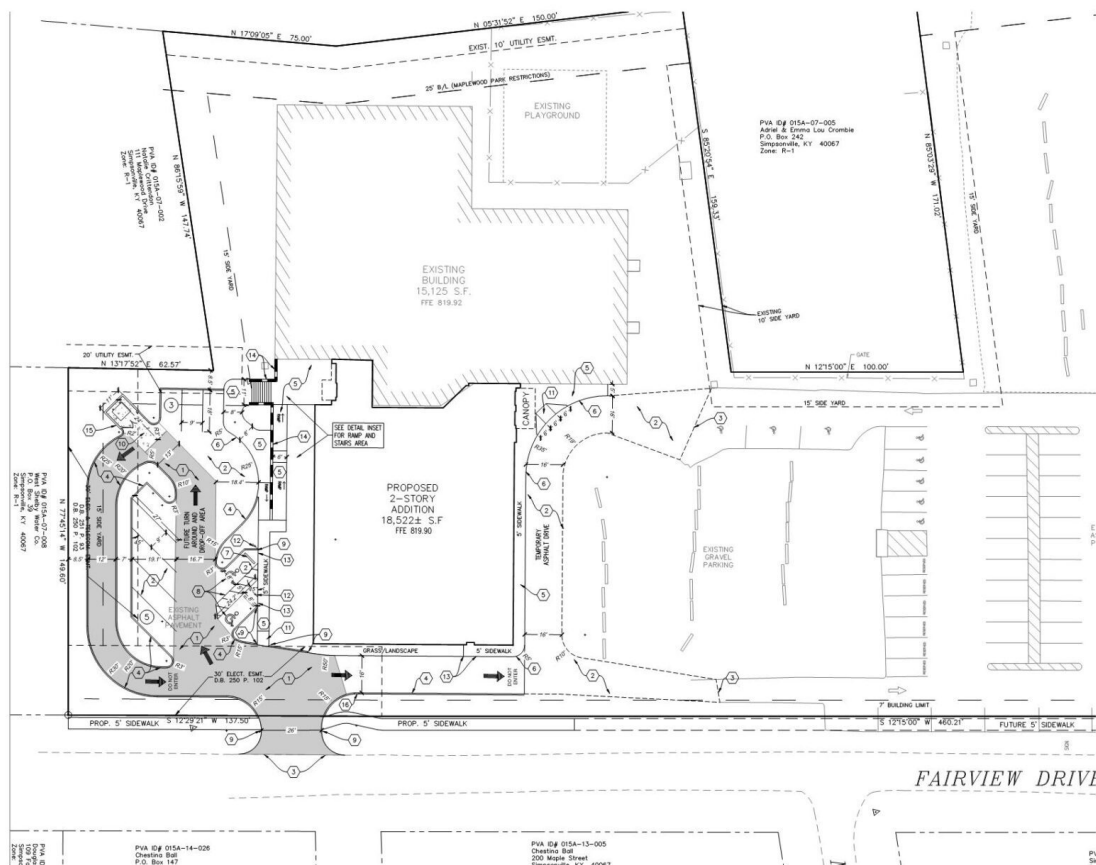


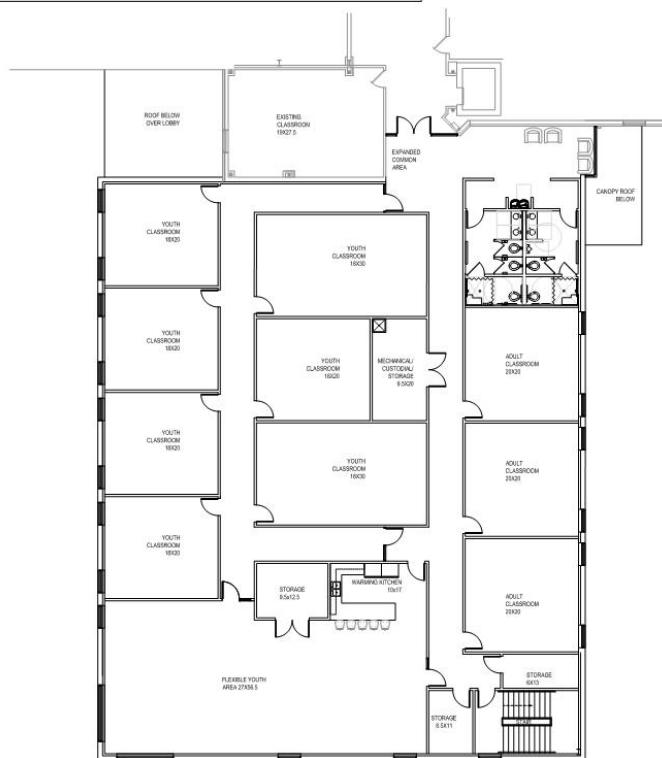










[illegible]

Property Details

This project is approximately an 18,500 s.f. two story Office/Classroom addition to the existing church facility. This is phase one of the overall development plan. Lichtefeld, Inc. along with Studio Kremer Architects redesigned and value engineered this project to be done in 2 phases to meet the churches budget constraints. A sanctuary will be added in the future. The new addition and interior remodel is comprised of a Butler Mfg. skeletal structure, with MR-24 standing machine seamed roof system, 25 year warranty on the roof, Stylewall flat panels, Butler trims, gutters, and downspouts, Maxbrix block walls, storefront glass windows and doors, decorative entry canopy, bar joists, concrete deck second floor, and standard finishes for carpet, tile, paint, doors, and ceilings. The building is being constructed with enough planning in mind for the future Sanctuary. The lobby will have some unique features such as a center console reception station, built in coffee bar, lounge



Simpsonville Baptist Church

area, and a warming kitchen.

Project designed and built by LichteFeld, Inc. partnered with Studio Kremer Architects.