

Projects

[LichteFeld Inc](#) > [Projects](#) > Theatre Building

Theatre Building

Office Buildings



Square Feet

34,572 s.f.



Project Location

629 4th Street Louisville, Ky



Construction Dates

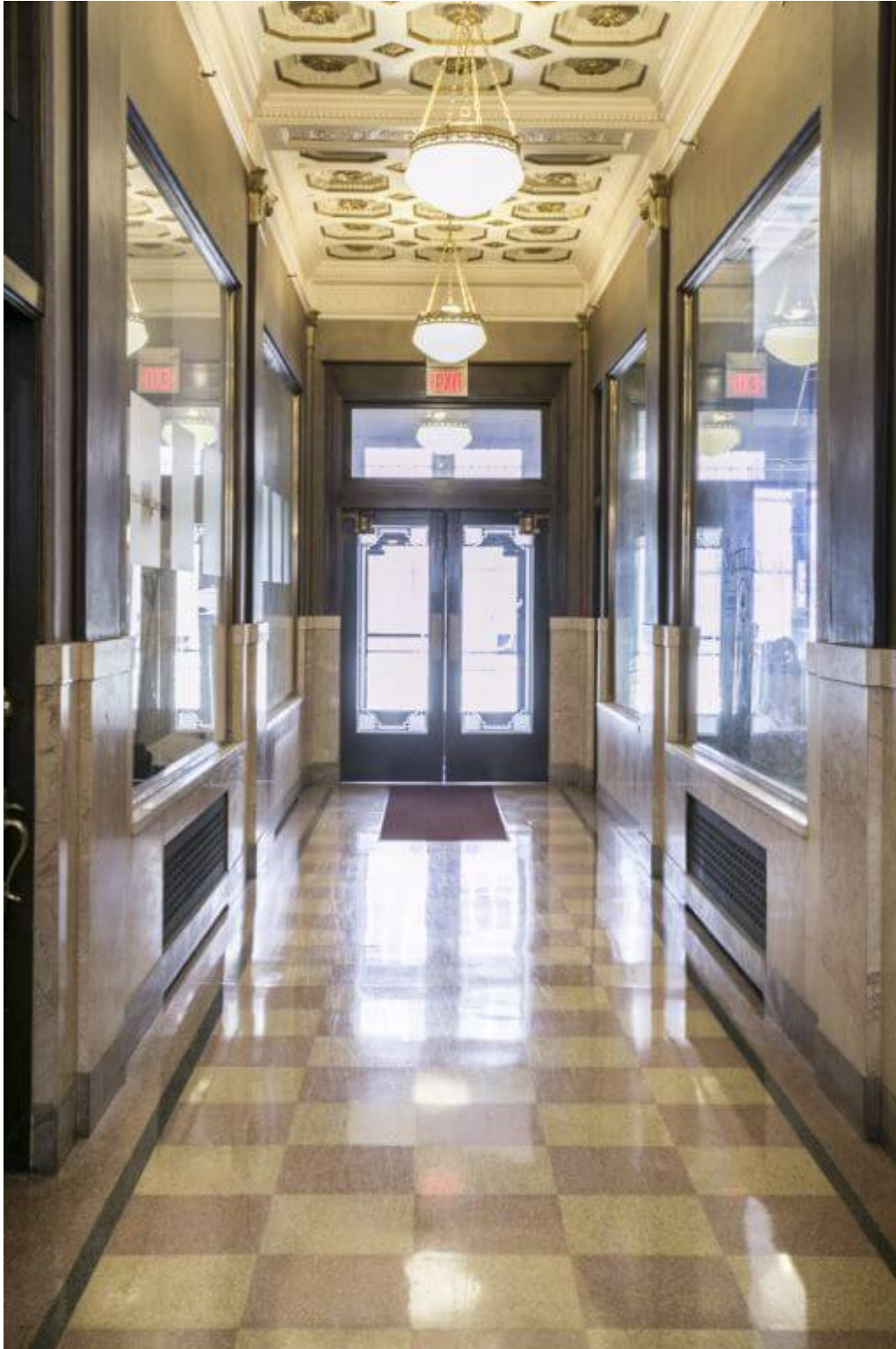
Built in 1929 Renovated in 1984



End User

Office

























Property Details

Project was bought and redesigned/ fully renovated by LichteFeld Inc. in 1984. This building is on the historical register and complies with the historical renovation processes as required by the commission.

Located in the heart of the revitalized sections of Fourth Street in Louisville's central business district, the Theatre Building sits between Broadway and Chestnut Streets. The property offers easy access to the Interstate Highway system, restaurants, hotels, and shopping. The property sits between the medical, legal, entertainment and arts districts of the CBD. Ample parking opportunities for tenants and clients at numerous nearby garages and metered street parking spots.

The beautifully renovated art deco building provides modern amenities while maintaining the historic nature of the 1920's building. The original facade of terra cotta and glazed-tile panels was left in tact. The building was designed by John Eberson, a famous architect who also designed the Loews/United Artists theater, now the Palace. The main entrance is finished in smooth red marble and recessed bronze-plated double doors. The lobby features large chandeliers and a coffered ceiling that is adorned by rosettes.

- **Building Type:** Office
- **Year Built:** 1929 (Renovated 1984)
- **Total Building Size:** 34,572 RSF
- **Total Available:** 31,204 RSF
- **Number of Floors:** 4