

# Projects

[LichteFeld Inc](#) > [Projects](#) > Thermo King Midwest

## Thermo King Midwest

[Office / Warehouse](#), [Trucking Facilities](#)



### Square Feet

25,000 s.f. of remodel and building addition



### Project Location

3405 Industrial Parkway, Jeffersonville, IN 47130



### Construction Dates

Dec. 2021 thru July 2022



### End User

Refrigerated truck installation and repair.





Tractor trailer Parking lot









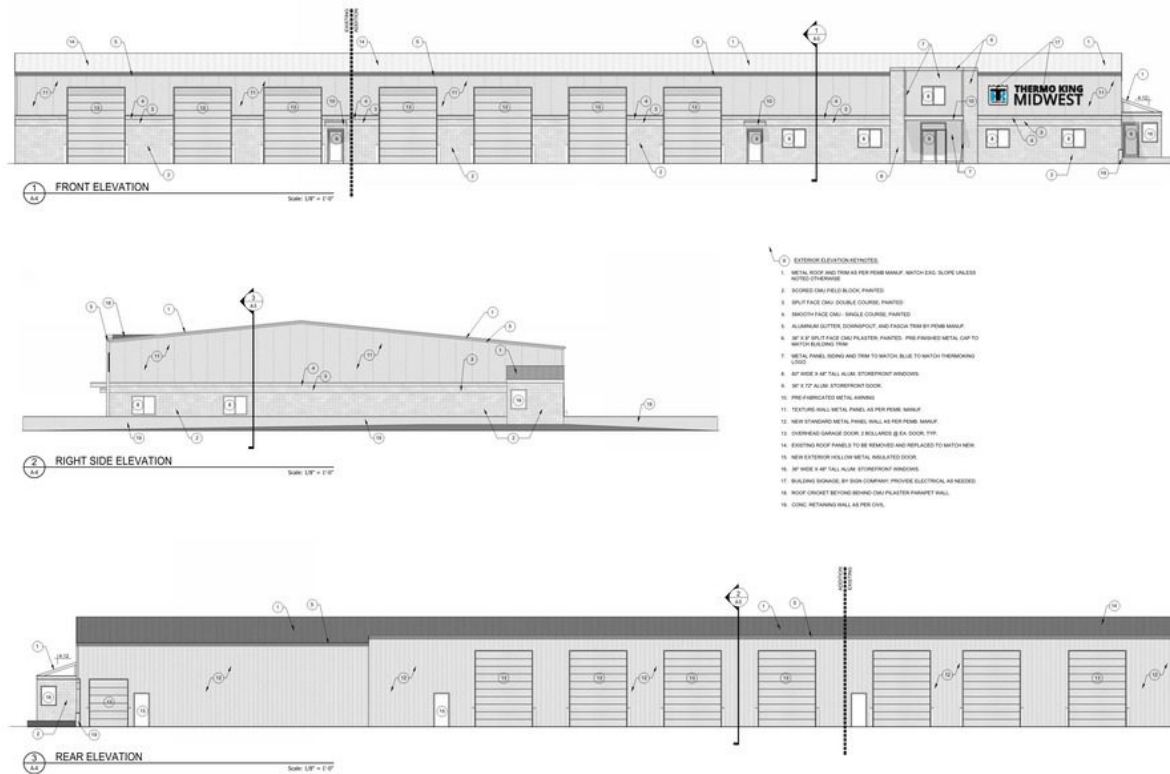






Thermo King - Exterior Perspective





## Property Details

Thermo King Midwest, located in Jeffersonville, IN, bought 4 acres next to their current 2 acre facility located at 3405 Industrial Blvd., for expansion. The combined total acreage of the property is approx. 6 acres. Thermo King will develop 3 acres into a private truck storage/trailer parking lot. The current building facility is 13,918 s.f.. LichteFeld will demolish approx. 4,800 s.f. of old outdated office/parts storage area and add approx. 12,500 s.f. for a new office complex and new updated truck repair bays approx 26,000 sf total. The bays are for refrigerated truck/trailer repair and new install of refrigerated trailer units. The new construction is a Butler metal building system, MR-24 standing machine seamed roof, 25 year warranty, a re-roof of the existing building with MR-24, new thermo insulated wall panels, new overhead doors, new exterior walls, and entire upgrade of the current façade, 10' tall block wainscot, new store front glass windows, new entrance with truck trailer stacking off the road, new fencing system, new access controls, and updated landscaping.

This project is designed and built by LichteFeld, Inc. partnered with Architectural



Thermo King Midwest

Investments and Butler Manufacturing.